

§3012-d: New Structure for APPR

§3012-d: Student Performance



§3012-d: Student Performance

Grades 3-5	Original	Alternate Transition Period
Grade 3 ELA and Math	ELA/Math SLO based on Pre-assessment and Grade 3 NYS ELA/Math Assessment	District-Wide SLO* Based on the following Regents: CC English Living Environment US History
Grades 4 and 5 ELA and Math	State-Provided Growth Score	District-Wide SLO*
All other subject teachers	District-Wide SLO*	Not Applicable
ENL Teachers	NYSESLAT	Not Applicable
Special Education	NYSAA or District Wide SLO*	Not Applicable

§3012-d: Student Performance

Grades 6-8	Original	Alternate Transition Period
Grades 6, 7, and 8 ELA and Math	State-Provided Growth Score	District-Wide SLO* Based on the following Regents: CC English Living Environment US History
Grade 8 Science Teachers	Grade 8 State Science Assessment or Earth Science Regents	Not Applicable
All other subject teachers	District-Wide SLO*	Not Applicable
ENL Teachers	NYSESLAT	Not Applicable
Special Education	NYSAA or District Wide SLO*	Not Applicable

§3012-d: Student Performance

9-12	Original	Alternate Transition Period
Teachers of the following: CC ELA Global II US History Earth Science Living Environment Chemistry Physics CC Algebra CC Geometry CC Algebra II	Must use Regents assessment where applicable: CC ELA Global II US History Earth Science Living Environment Chemistry Physics CC Algebra CC Geometry CC Algebra II	Not Applicable
Grades 9-12 All Other Subjects	District-wide SLO* CC English Living Environment US History	Not Applicable
ENL Teachers	NYSESLAT	Not Applicable
Special Education	NYSAA	Not Applicable

§3012-

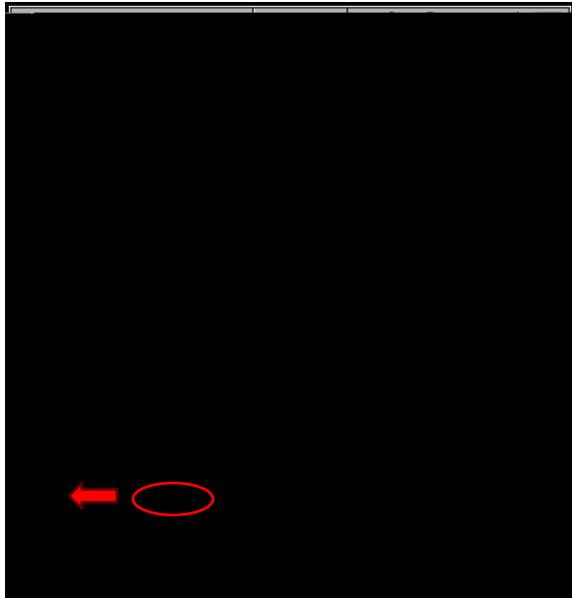
Overall HEDI Scoring Matrix

Calculating final rating

New APPR system eliminates the 100 Point Overall Composite Score

Example: 87% of students attained target

Teacher received a 3.85 score in this component



Find % of students meeting target and points attained in the observations, and use HEDI ratings on left

	Minimum	Maximum
HE ←	3.5	4.0
E	2.5	3.49
D	1.5	2.49
I	0	1.49

For OVERALL HEDI, take ratings from Student Performance and Classroom Observation components and find where the 2 ratings meet.

